



www.vardhamanspaces.com

## CREDITS

**ARCHITECT**  
Unusual Spaces

**RCC CONSULTANT**  
Hansal Parekh & Associates

**LEGAL ADVISOR**  
Adv. Rohan Nimbalkar

**3D VISUALIZATION**  
Atelier Graphics

**BRAND & MEDIA**  
Silk Route

Site: Sr.No.12(P)/13(P), Aundh - Ravet BRTS Road,  
Near Dange Chowk, Tathawade, Pune 411 033

sales@vardhamanaltezza.com  
www.vardhamanaltezza.com  
Call: 7349 161 666



MAHA-RERA Regn. No.:  
P52100056423

Available at [www.maharera.mahaonline.gov.in](http://www.maharera.mahaonline.gov.in)



Disclaimer: The contents/ pictures/ images/ renderings/ maps are purely indicative in nature and are artist's conception and not actual depiction of the buildings/ landscapes etc. and shall not be considered as our offer/ promise/ commitment of any nature in respect of the project. The common areas that have been shown in any form whatsoever is/are for the entire building or phase of the Project and that the common areas will not be available on completion of the first phase of the Project or later phases. The common areas shall be available for the entire building and will be developed in a Phase-wise manner, over a period of time and will be completed and handed over after all phases are completed and we have no objection for the same. You are requested to contact our Sales Team to understand the current details regarding the project and only after thorough understanding about the same, make a decision to book the apartment/s in the project.

# THE LEAP FOR YOUR LIFE



2&3 BHK IN  
CENTRAL TATHAWADE  
NEAR DANGE CHOWK





# THE LEAP LIFESTYLE

Raise the bar. Push the envelope. Live your life to the fullest. Presenting Altezza, that brings to you the exclusive leap lifestyle. Bringing the best of every facet, this meticulously crafted destination is set to capture the imagination of Tathawade. This is where the best of lifestyle features converge to bring a big change in your life. Brought to you by one of the experts in real estate, this development is truly a leap for your family. All set to adorn West Pune's skyline, Altezza is a shining gem that will leave everyone spellbound.



# THE LEAP BEGINS!

Welcome to the world of Altezza. Get a feel of grandeur right at the entrance. Once you enter, you will feel like you've stepped into a different world. Let the awe-inspiring beauty elevate your mood. Discover uncompromising safety standards introduced for your family.



Attractive Entrance Gate



3-Tier Security System  
(CCTV Cameras in Specific  
Common Areas / Lift Lobby)



Electronic Boom  
Barrier at Entrance



Society Office  
Security Cabin



\*An architectural rendered image for presentation purpose only





\*An architectural rendered image for presentation purpose only

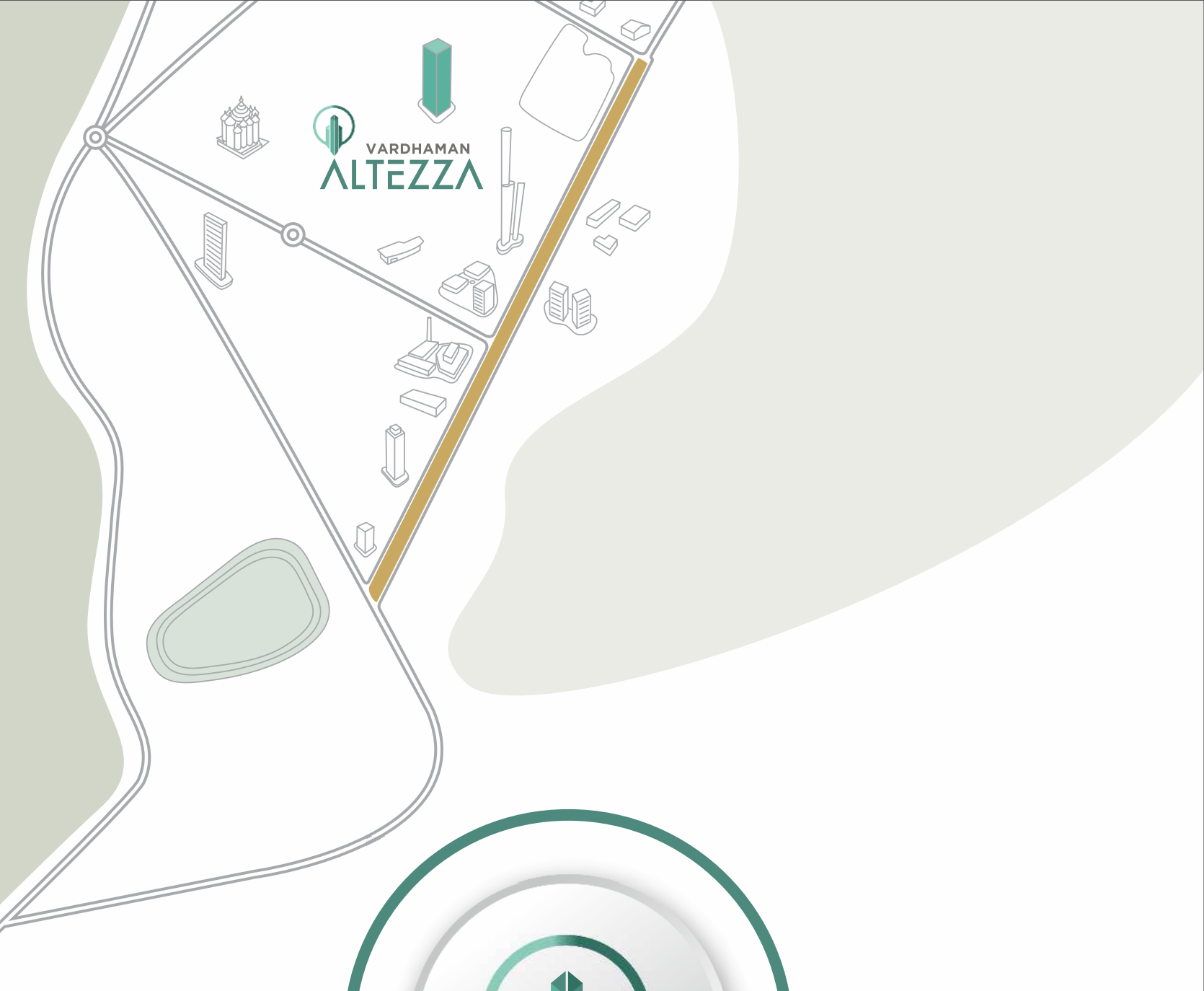
# LEAP WITH EXCEPTIONAL PLANNING

Planning is at the heart of everything that we do. By bringing the best minds in the industry, we've ensured that every facet is given the desired attention. Right from the layout and design to the assortment of features and facilities, the meticulous planning serves as the foundation for perfection at Altezza.



# LEAP WITH A CENTRAL LOCATION

Why compromise when you can live right in the middle of a thriving suburb? Located in Central Tathawade, access to everything will be a breeze for you and your family. Right from convenience stores, ATMs to healthcare and education centres, the best of the urban world is right in the vicinity of the project.



### CONVENIENCE

D-Mart	04 km	08 mins.
Phoenix Mall	3.4 km	07 mins.
Elpro Mall	4.2 km	10 mins.

### BANK AND ATM

SBI	3.7 km	09 mins.
HDFC Bank ATM	2.9 km	06 mins.
Axis Bank ATM	4.1 km	09 mins.

### HOTELS

Barbeque Nation	3.5 km	08 mins.
Hotel Blue Water	03. km	06 mins.
Mc Donalds	1.7 km	10 mins.
Sky Blue	1.6 km	12 mins.
Rosewood Hotel	04 km	17 mins.
Sayaji	3.5 km	11 mins.
Tip Top	4.2 km	13 mins.

### LANDMARK

Mumbai Bangalore Highway	3.7 km	07 mins.
Pune University	15 km	20 mins.
Hinjewadi	6.9 km	14 mins.
Dange Chowk	2.3 km	04 mins.
Bhumkar Chowk	4.2 km	10 mins.

### TRAVEL AND ACCESIBILITY

Shivaji Nagar Railway Station	15 km	27 mins.
Pune Railway Station	17 km	39 mins.
Pune International Airport	18 km	44 mins.
Akurdi Railway Station	05 km	11 mins.
HP Petrol Pump	0.5 km	02 mins.
Metro Station Pimpri	6.1 km	15 mins.
Metro Station Wakad	4.8 km	10 mins.

### FITNESS CENTRE

Golds Gym	3.6 km	08 mins.
Gym Khana	5.7 km	11 mins.
Nitros Gym	3.8 km	16 mins.

### SPORTS CENTRE

Sarai Sports Academy	5.9 km	14 mins.
Silver Sports Club	4.8 km	10 mins.

### EDUCATION

The Academy School	0.8 km	01 mins.
Indira College	3.9 km	10 mins.
Orchid School	2.3 km	05 mins.
Balaji Law College	1.9 km	04 mins.
Dr. DY Patil B School	3.5 km	08 mins.
Dr. DY Patil College	4.1 km	08 mins.

### HOSPITALS

Aditya Birla Hospital	2.5 km	05 mins.
Vatsaly Multi	1.6 km	04 mins.
Specialty Hospital		

\*Distances mentioned are for presentation purpose. Actual distances may differ. \*Travel time may vary as per the time of the day.



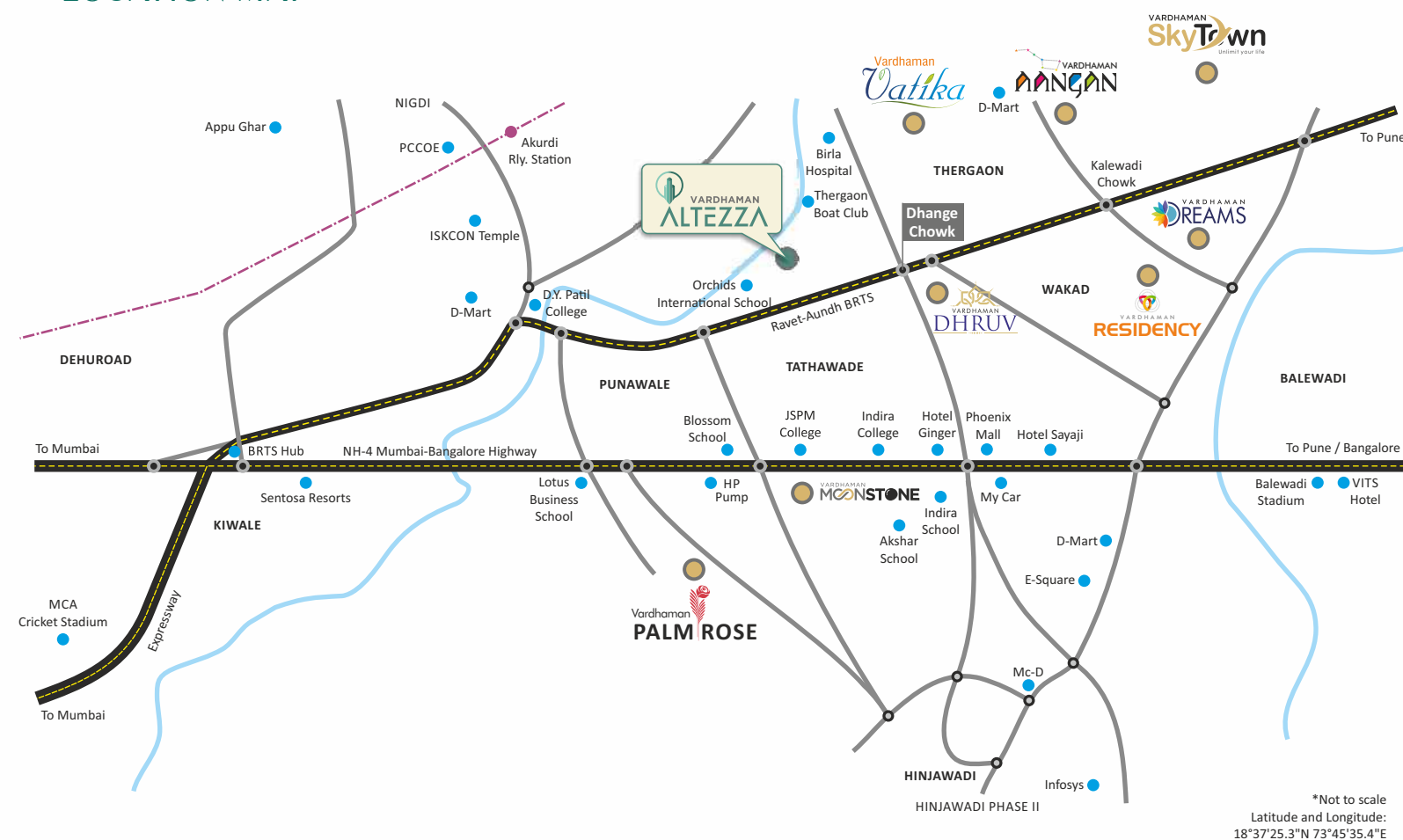


# LEAP WITH TOP-NOTCH ACCESS

Reach your workplace in minutes. Find the finest of fashion brands right near you.

Take your taste buds on a delicious adventure with the countless eateries in and around Tathawade. It doesn't get better than this. Not just West Pune, Altezza simplifies your access to the central locations of Pune too. So, let life's finest experiences unfold effortlessly.

## LOCATION MAP



- Just 500 m from Dange Chowk
- Easy access to prime suburbs of Pune
- Located on Aundh-Ravet BRTS Road
- Aundh, Baner, Balewadi at a convenient distance
- Easy access to two highways
- Connectivity to Hinjawadi & Bhosari MIDC
- Upcoming metro
- Pavana River around



# LEAP WITH GRANDEUR & EASE



At Altezza, luxury echoes right through every aspect. It's not just the living spaces but even the common areas are designed to captivate. Admire the grand entrance lobby. Be awe-inspired by the tastefully designed waiting lounge. Move seamlessly with hi-speed lifts. Discover a seamless fusion of grandeur and convenience throughout the project.



Double height entrance lobby



Waiting lounge



3 stretcher hi-speed lifts



Garbage store room









\*An architectural rendered image for presentation purpose only

## LEAP WITH ADVANCED LIVING

Right since the planning stage, our emphasis has been on enabling the residents to live every moment. We've focussed on elevating the experiences of the residents through an array of features and facilities, designed for tomorrow. Park your car with ease. With a provision for EV charging points, you can plan a setup and charge easily.



6-level parking



Fire fighting  
system



Provision for  
EV charging



DG backup for  
common area and lift



# LEAP WITH A SUSTAINABLE WAY OF LIFE

- 14+ ROOFTOP AMENITIES
- 6+ GROUND AMENITIES

A joyous life for you and delight for the planet too. With the introduction of environment-friendly features, each one of us can make a difference through our small actions. Let's embrace the change and ensure a better life for the generations to come.



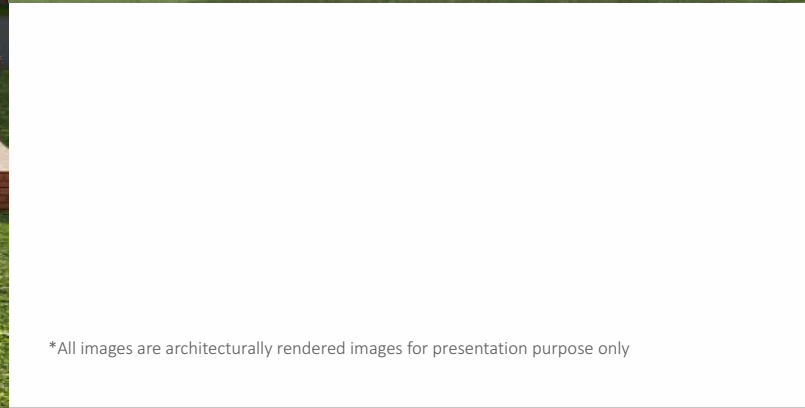
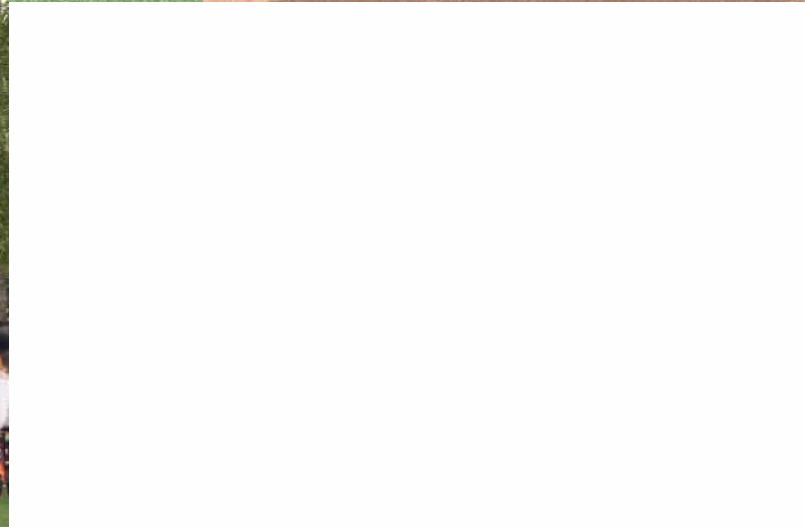
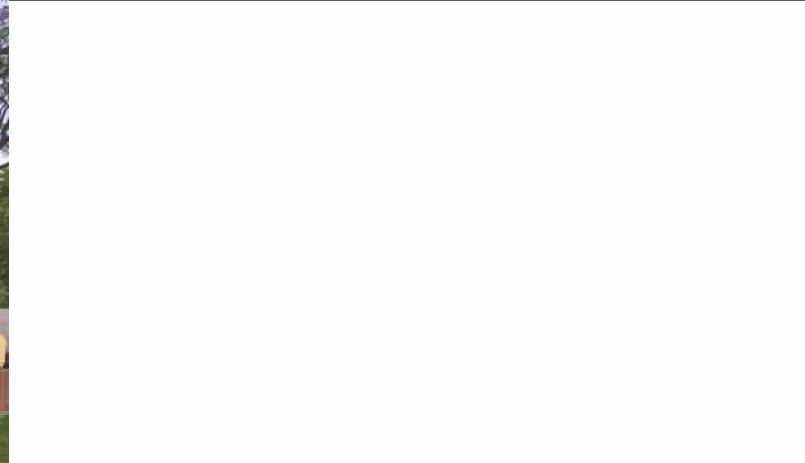
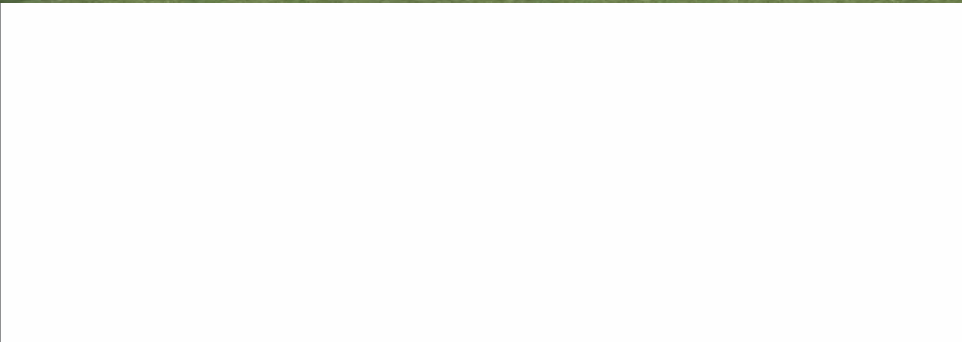
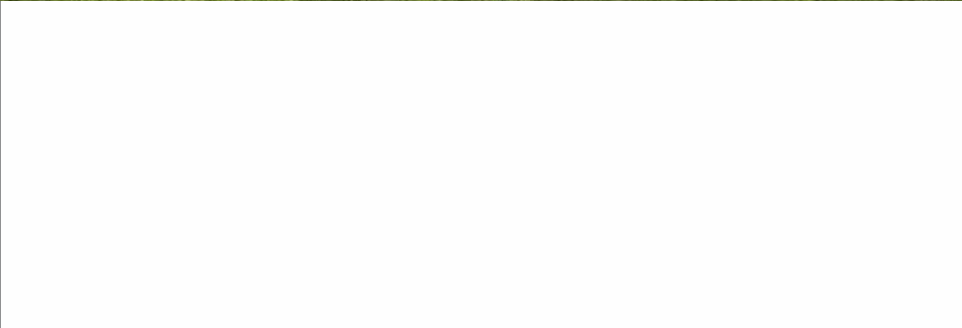
## GREEN FEATURES

- Rainwater harvesting
- Sewage treatment plant
- Organic waste converter

\*An architectural rendered image for presentation purpose only



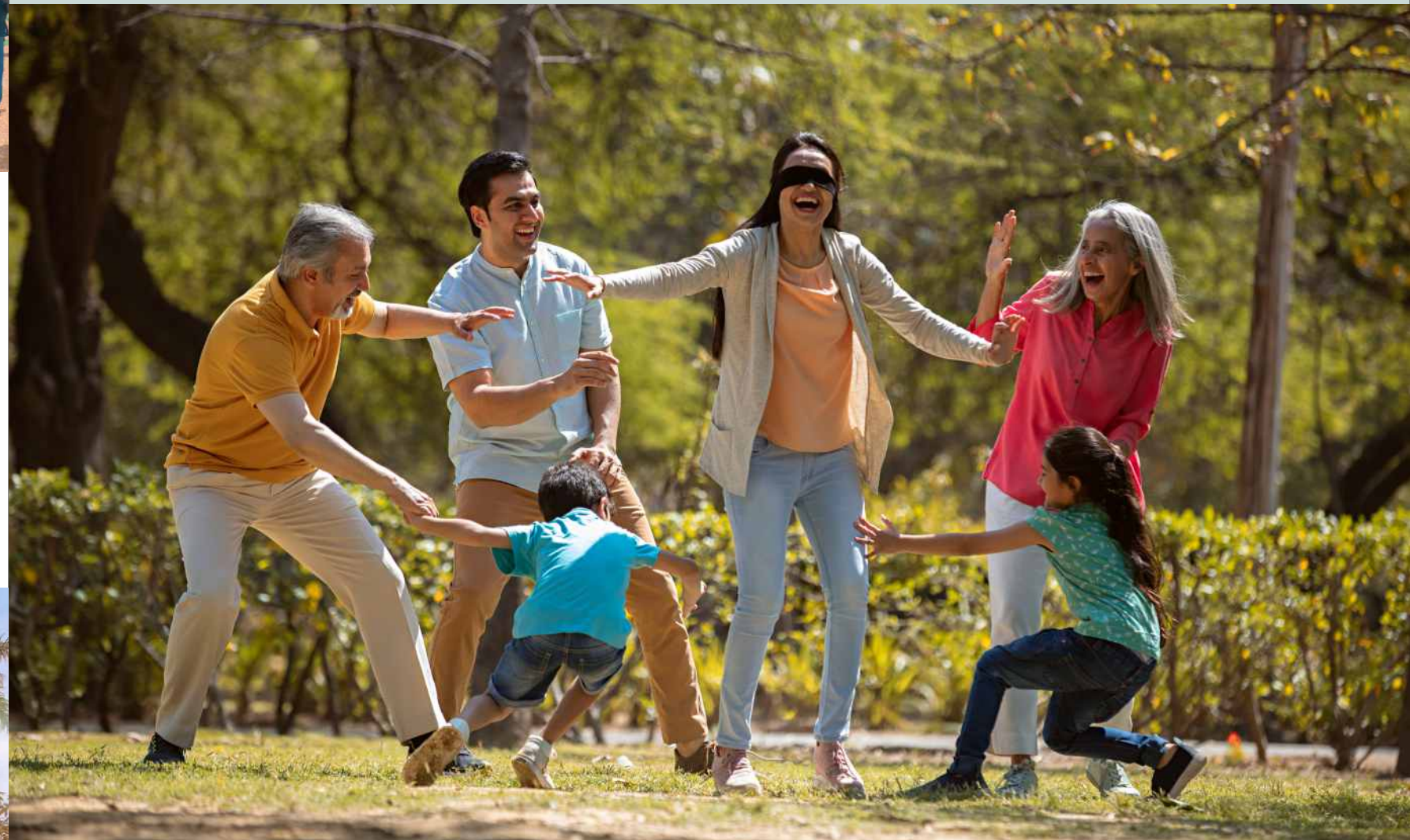




# LEAP WITH TOGETHERNESS

Celebrate every moment with a community of like-minded individuals.

We've designed spaces that foster bonding amongst the residents. Be it special occasions, festivals or events, unite to thrive at Altezza.



## GROUND AMENITIES



Party Lawn  
With Stage



Children  
Play Area



Gazebo  
Sitting Area



Temple



Mini Amphitheatre  
Area



Flag  
Hoisting Pole

\*All images are architecturally rendered images for presentation purpose only



# LEAP WITH A DELIGHTFUL WORLD ON THE ROOFTOP

Escape the routine and dive into a world of excitement.

Discover exceptional experiences on top of the world.

## ROOFTOP AMENITIES



- Infinity swimming pool

- Baby pool

- Deck at pool



- Specific shower/changing room

- Indoor games



\*All images are architecturally rendered images for presentation purpose only





# YOUR GATEWAY TO EXCITEMENT, CELEBRATIONS AND WELLNESS



- Indoor gym



- Interactive seating area

- Walking / Acupressure path



- A/C multipurpose hall

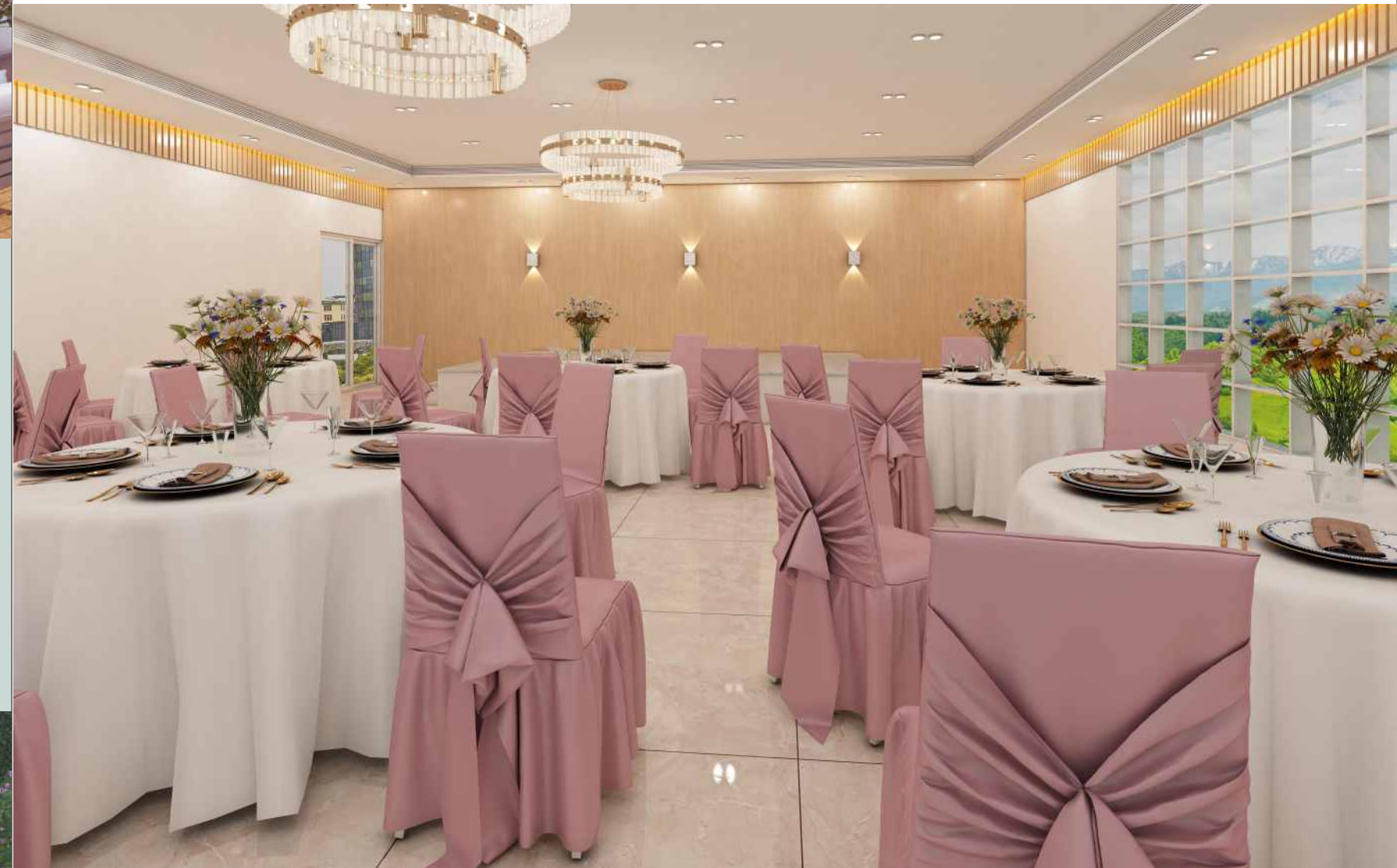
- Party lawn

- Party deck



- Yoga/meditation area

- Co-working space with power sockets



\*All images are architecturally rendered images for presentation purpose only





# LEAP WITH PEACE OF MIND

Safety never takes a backseat at Altezza. Be worry-free as we have a host of advanced features that take care of your safety and security.



- Video door phone



- Intercom facility



- Semi home automation



- Biometric main door lock



- Solar water tap in one washroom



- False ceiling in living room



\*All images are architecturally rendered images for presentation purpose only



# LEAP WITH A FINE ENSEMBLE

Get nothing but the best. Experience a classy way of life with the finest of specifications. Be it the living room or your kitchen, discover top-class fittings that ensure complete comfort, ease and class.

## SPECIFICATION:

### STRUCTURE:

- Earthquake-resistant RCC structure with aluminum formwork

### WALL FINISH:

- Masonry:
- Gypsum finish walls internally

### Paint:

- Internally oil-bound distemper
- Externally weather shield paint

### Tiles:

- Dado tiles in washroom, toilets, and above the kitchen platform up to beam level

### KITCHEN:

- Granite platform with 2 stainless steel sinks in the kitchen and enclosed dry balcony
- Provision for water purifier

### FLOORING:

- Living room, dinning, bedroom, and kitchen:
- 2' x 4' vitrified floor tiles
- Washroom, toilet, and balcony:
- Antiskid floor tiles

### WINDOWS:

- 3-track powder-coated aluminum sliding with insect mesh
- M. S. safety grill and granite frame

### DOORS:

- Entrance door:
- Biometric lock for the main door with standard accessories
  - Pre-laminated flush door
- Bedroom:
- Both side laminated flush door with standard accessories
- Toilets:
- Granite frame and waterproof flush door with both side lamination and standard accessories
- Balcony:
- Aluminium powder-coated 3-track sliding door with insect mesh
  - Glass railing

### PLUMBING:

- Concealed piping
- Sanitary and bath fitting of (A) reputed brand
- C.P. fittings of (A) reputed brand
- Wall-hung WC units with concealed flush tank
- Provision for geyser in all washrooms

### ELECTRICAL:

- Concealed fire-retardant low smoke copper wires
- Circuit breaker
- TV and telephone point in living and master bedroom
- Modular switches
- Split AC provision in living and all bedrooms
- Fridge, oven, and food processor point in the kitchen
- Provision for exhaust fan in the kitchen and all washrooms







\*An architectural rendered image for presentation purpose only



# THE PERFECT PLAN FOR A LIFETIME OF JOY

Take the right decision with a life-changing destination.  
Gift eternal happiness to your family.



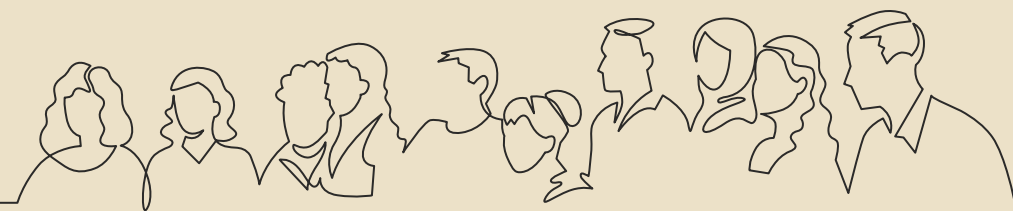


## LEAP WITH A RENOWNED DEVELOPER

We, at Vardhaman Spaces, are one of the leading real estate players in Pune. After scripting a success story in the Diamond and Jewellery business for over three decades, we ventured into the real estate and infrastructure sector.

Since our inaugural project, the company has consistently delivered excellence which has been driven by top-class quality, cutting-edge technology, and adaptability.

Under the leadership of Mr. Prakash Chajjed and with the support of his son Mr. Nikhil Chajjed, Vardhaman Spaces is poised for continued growth, with several upcoming projects slated for launch in the coming years.



**17+**

Years of  
Experience

**19.2**

Acres  
Developed

**22**

Lacs Sq. Ft  
Constructed

**2400**

Happy  
Families

**15**

Lacs Sq. Ft  
Upcoming

Timely  
Possession



VARDHAMAN  
**SkyTown**  
Unlimit your life

2 & 3 BED PREMIUM RESIDENCES  
RAHATNI - PIMPLE SAUDAGAR



VARDHAMAN  
**MOONSTONE**

1, 2 & 3 BHK HOMES  
@ TATHAWADE



VARDHAMAN  
**MOONSTONE**  
**BUZZ** #BizNonstop

SHOPS, SHOWROOMS & OFFICES  
@ TATHAWADE

\*An architectural rendered image for presentation purpose only

